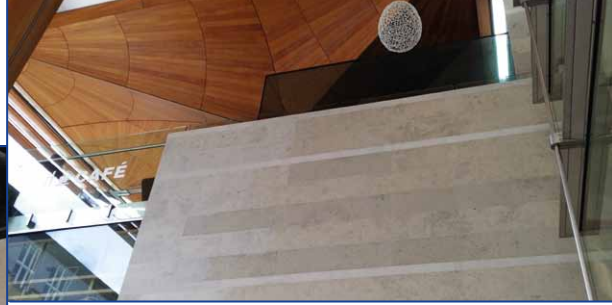




# *Auckland Art Gallery* *(Toi O Tamaki)*

Reference No. 06/2014



# Auckland Art Gallery (Toi O Tamaki), New Zealand

The Auckland Art Gallery (Toi O Tamaki) shows a wide variety of New Zealand historic and modern art as well as works by Maori and Pacific Islands artists. Since the expansion of the gallery building, more than one million people have visited the extensive collection.

The new part of the building features a material mix of wood, glass and natural stone. The floors and wall claddings are done in Jura Limestone. In order to protect the stone from staining, the complete surface was treated with Lithofin **STAINSTOP ›W‹**. Auckland Art Gallery was named building of the year at the World Architecture Festival in Singapore.

Project: Auckland Art Gallery (Toi O Tamaki)

Surface: Jura Limestone, polished and honed  
Floors and walls, approx. 1,600 m<sup>2</sup>

Completed by: Italian Stone Ltd.  
New Lynn, Auckland  
[www.italianstone.co.nz](http://www.italianstone.co.nz)

European Stone Masons Ltd  
New Lynn, Auckland  
[www.europeanstonemasons.co.nz](http://www.europeanstonemasons.co.nz)

Surface treatment: Lithofin STAINSTOP ›W‹

Time frame: 2013

